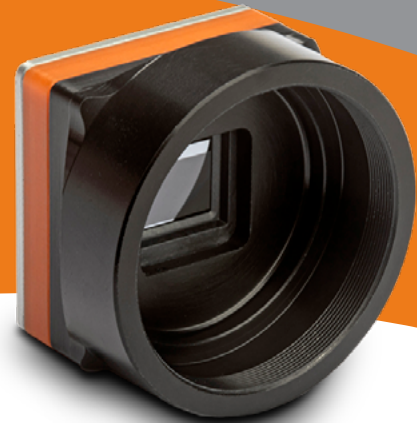


## DIONE 320 SERIES

- Uncooled thermal imaging SWaP module
- 320x240 pixels
- 12  $\mu\text{m}$  pitch
- CameraLink



### COMPACT, INDUSTRIAL THERMAL CAMERA

The Dione 320 series is based upon the Dione 320 OEM thermal imaging core with 320x240 pixels and 12  $\mu\text{m}$  pixel pitch. The NETD (Noise Equivalent Temperature Difference) is less than 50 mK and the maximum frame rate is 60 Hz.

Dione 320 is a LWIR uncooled thermal imaging SWaP module with housing supporting M24/M34 lens.

Dione 320 series benefit from Xenics image enhancement for advanced image processing while keeping power consumption low (<580 mW). A 16-bit digital video output (compatible with CameraLink) is available on all versions, via SAMTEC ST5 connector. Moreover, GenICam compliance and the availability of multiple lens provides high level of tunability for optimal integration into many systems.

### DESIGNED FOR USE IN

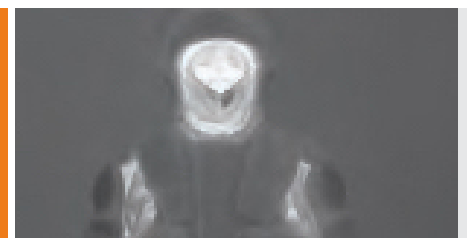
- Industrial Machine Vision
- Medical
- Scientific & Advanced Research
- Safety & Security

### ADVANTAGES

- State-of-the-art detector with 12  $\mu\text{m}$  pitch
- Industry leading SWaP (Size, Weight and Power)
- GenICam compliant for easy integration
- Shutterless operation
- Availability with multiple lenses
- High level of tunability for optimal integration into many systems
- Part of the highly flexible and interchangeable Dione family series



Border Security



Thermal Security



Vision Enhancement

## SPECIFICATIONS

Camera Specifications	DIONE 320 CAM M24	DIONE CAM M34
<b>Mechanical specifications</b>		
Camera dimensions (width x height x length) [mm] (approx.)	31 x 31 x 22	40 x 40 x 24
Optical interface	M24x0.5	M34x0.5
Camera weight [gr]	27	30
Connector general I/O	SAMTEC ST5-30-1.50-L-D-P-TR	
<b>Environmental &amp; power specifications</b>		
Operating temperature range (housing temperature) [°C]	From -40 to +70	
Storage temperature [°C]	From -45 to +85	
Power consumption	<580 mWatt (at 60 Hz operation)	
Power supply voltage	DC 5 V	
Shock	40 g, 11 ms, MIL-STD810G	
Vibration	5 g (20 to 2000 Hz), MIL-STD810G	
Regulatory compliance	RoHS	
<b>Electro-optical specifications</b>		
Image format [pixels]	320x240	
Pixel pitch [µm]	12	
Integration type	Rolling shutter	
Active area and diagonal [mm]	3.84 x 2.88 (diagonal 4.8)	
Detector NETD [Noise Equivalent Temperature Difference] [mK]	<50 (at 60Hz, 300K, F/1)	
Spectral range [µm]	8-14	
Pixel operability	>99.8%	
Max frame rate [Hz] [full frame]	60	
Integration time range [µs]	20 - 65	
Region of interest	Yes	
Min region size [pixels]	80 x 80	
Analog-to-Digital [ADC] [bits]	16	
Command and control	via SAMTEC ST5 connector	
Digital output format	16 bit (compatible with CamerLink)	
Trigger	via SAMTEC ST5 connector	
<b>Product selector guide</b>		
Part number	XEN-000790	

XDS034 | Information furnished by Xenics is believed to be reliable. However, no responsibility is assumed for possible inaccuracies or omissions. Specifications are typical values and subject to change without notice. This information supersedes all previously supplied information.



For more information on our products  
Please scan the QR code.

[www.xenics.com](http://www.xenics.com) | [www.sinfrared.com](http://www.sinfrared.com)