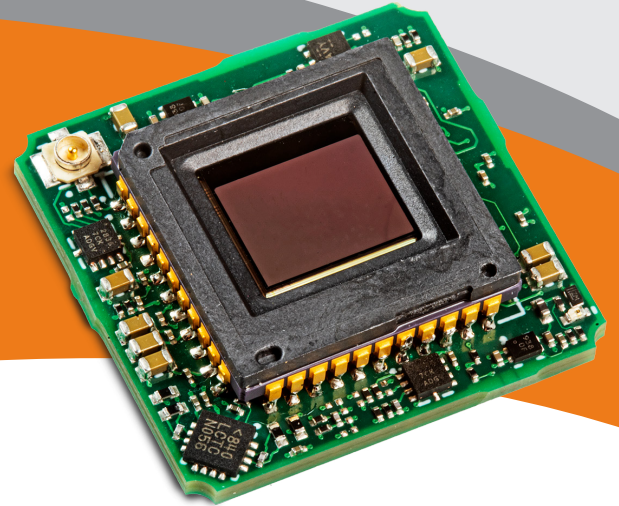


DIONE 320 OEM SERIES

- Uncooled thermal imaging SWaP module
- 320x240 pixels
- 12 μm pitch
- CameraLink



COMPACT, INDUSTRIAL THERMAL CAMERA

The Dione 320 series is based on a state-of-the-art detector with a 320x240 pixels and 12 μm pixel pitch. The NETD (Noise Equivalent Temperature Difference) is less than 50 mK and the maximum frame rate is 60 Hz.

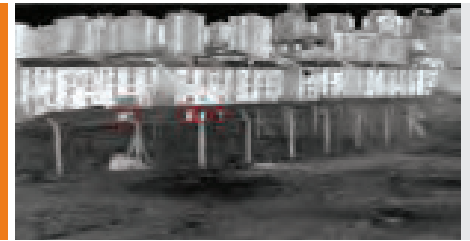
Dione 320 versions benefit from Xenics image enhancement for advanced image processing while keeping power consumption low (<580 mW). A 16-bit digital video output (compatible with CameraLink) is available on all versions, via SAMTEC ST5 connector. Moreover, GenICam compliance and availability of multiple lenses adds flexibility for integration programs in the target markets such as industrial machine vision, medical, scientific and advanced research, safety and security applications.

DESIGNED FOR USE IN

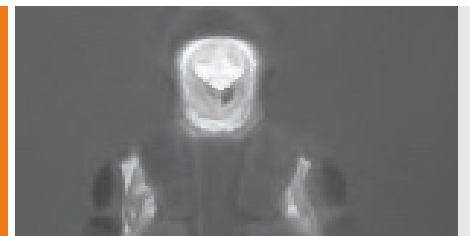
- Industrial Machine Vision
- Medical
- Scientific & Advanced Research
- Safety & Security

ADVANTAGES

- State-of-the-art detector with 12 μm pitch
- Industry leading SWaP (Size, Weight and Power)
- GenICam compliant for easy integration
- Shutterless operation
- High level of tunability for optimal integration into many systems
- Part of the highly flexible and interchangeable Dione family series



Border Security



Thermal Security



Vision Enhancement

SPECIFICATIONS

Camera Specifications	DIONE 320 OEM
Mechanical specifications	
Camera dimensions (width x height x length) [mm] (approx.)	25 x 25 x 10
Optical interface	-
Camera weight [gr]	6
Connector general I/O	SAMTEC ST5-30-1.50-L-D-P-TR
Environmental & power specifications	
Operating temperature range (housing temperature) [°C]	From -40 to +70
Storage temperature [°C]	From -45 to +85
Power consumption	<580 mWatt (at 60 Hz operation)
Power supply voltage	DC 5 V
Shock	40 g, 11 ms, MIL-STD810G
Vibration	5 g (20 to 2000 Hz), MIL-STD810G
Regulatory compliance	RoHS
Electro-optical specifications	
Image format [pixels]	320x240
Pixel pitch [µm]	12
Integration type	Rolling shutter
Active area and diagonal [mm]	3.84 x 2.88 (diagonal 4.8)
Detector NETD [Noise Equivalent Temperature Difference] [mK]	<50 (at 60Hz, 300K, F/1)
Spectral range [µm]	8-14
Pixel operability	>99.8%
Max frame rate [Hz] [full frame]	60
Integration time range [µs]	20 - 65
Region of interest	Yes
Min region size [pixels]	80 x 80
Analog-to-Digital [ADC] [bits]	16
Command and control	via SAMTEC ST5 connector
Digital output format	16 bit (compatible with CamerLink)
Trigger	via SAMTEC ST5 connector
Product selector guide	
Part number	XEN-000789

XDS035 | Information furnished by Xenics is believed to be reliable. However, no responsibility is assumed for possible inaccuracies or omissions. Specifications are typical values and subject to change without notice. This information supersedes all previously supplied information.



For more information on our products
Please scan the QR code.

www.xenics.com | www.sinfrared.com