

# 悉尼新南威尔士大学中国学习中心

## UNSW Sydney China Learning Centre at Yixing & Shanghai

### Background 项目背景

UNSW Sydney launched its first China Learning Centre (CLC) at the Yixing Industrial Park for Environmental Science and Technology (ES&TP), where UNSW's Centre for Transformational Environmental Technologies (CTET) is located, to support those students who cannot return to the campus in Sydney to continue their studies. During T3 2020, the CLC has assisted more than 50 students to take online courses, develop thesis projects and carry out Industrial Training. Given the current stringent pandemic prevention policy, the Australian border remains closed. Therefore, the CLC will continue to operate during T1 2021 and help facilitate placements for current undergraduate and postgraduate students from the UNSW Faculty of Engineering and the School of Material Science & Engineering.

悉尼新南威尔士大学 (UNSW Sydney) 在中国宜兴环保科技工业园 (ES&TP)，即新南威尔士大学 (宜兴) 环境技术转移中心 (CTET) 所在地，成立了首个新南威尔士大学学习中心，以支持因新冠疫情旅行禁令而不能返回校园的中国留学生继续学业。在 2020 年第 3 学期，学习中心帮助 50 余位学生展开在线学习、论文研究以及企业实习等。由于当前疫情防控形势依然严峻，澳洲边境仍处于关闭状态，学习中心因此于 2021 年 T1 学期将继续开放，主要面向学生群体为工程学部和材料科学与工程学院的在读本科及硕士生，并将提供更多的招收名额。

With the great success of CLC in Yixing, UNSW Sydney is opening a new learning centre in Shanghai to provide support and engagement opportunities for UNSW students who are currently in China due to COVID-19 travel restrictions. CLC in Shanghai is located in Changyang Campus which sits in Yangpu district, the largest and most populous central district located in the northeast of downtown Shanghai. It is commencing in T1 2021 for all enrolled students with no restriction on degrees and programs.

宜兴学习中心的成功开展，促使悉尼新南威尔士大学在上海新增了一个学习中心，向受到出行限制的中国学生提供学习和社交空间以及支持服务。上海学习中心位于杨浦区的长阳创谷，而杨浦区是上海人口最多的市中心区域。上海学习中心将于 2021 第一学期向所有已注册课程的学生开放，无课程或学院限制。

### Key Dates 关键日期

Dates	Milestones
Monday 2020/12/14	Launch of the marketing campaign
Friday 2020/12/18	Information session with students and agents; Application/EOI opens
Friday 2021/1/8	Application/EOI closes
Friday 2021/1/15	Confirmation letters sent to students
TBC	Student orientation
Monday 2021/2/22	First day at Yixing & Shanghai Centres

日期	事项
星期一 2020/12/14	新闻发布

星期五 2020/12/18	信息说明会；申请开启
星期五 2021/1/8	申请截止
星期五 2021/1/15	向学生发送确认函
待定	迎新活动
星期一 2021/2/22	正式开学

### Key benefits to students 学生收获

- Provide a physical learning space for coursework students to undertake online studies, including access to high-speed internet for a reliable and responsive online education experience
- Opportunity to interact with other UNSW students and form study groups facilitated by the local partner
- Opportunity to engage with current students, alumni, industry partners, faculty members and gain access to a great range of student support services through a dedicated support program
- Opportunity to attend Alumni Talk, Master Class and other events organised by UNSW China Centre & CTET
- Opportunities for interaction with special guests from Sydney
- Opportunity to attend entrepreneurial activities organised by Changyang Campus (Shanghai Centre only)
- Facilitation of industrial training and research projects with local industry and research institutes with joint supervision by a Sydney-based UNSW academic and CTET research staff (Yixing Centre only)
- Opportunities for attendance at research forums organised by CTET which provides access to scientific information as well as networking opportunities with industry potential employers (Yixing Centre only)
- Access to campus facilities including lecture theatres, multimedia rooms, meeting rooms, cafeteria, gym and library (Yixing Centre only)

学生将得到以下一系列的指导和支持支持，包括：

- 为授课型学位的学生提供一个学习空间，提供高速网络服务，确保高质量的在线学习体验；
- 与其他学生交流，或组成学习小组；
- 有机会与在校生、校友、行业合作伙伴、教职员工取得联系，获得相应的支持服务；
- 有机会参加由 CTET（宜兴学习中心）和悉尼新南威尔士大学中国中心（上海学习中心）组织的各类活动，包括校友分享、大师课等；
- 有机会与远在悉尼的特别嘉宾进行互动
- 有机会接触到长阳创谷举办的各种创业活动（仅限上海学习中心）；
- 在 UNSW 学术人员和 CTET 研究人员的联合指导下，于当地企业和研究机构开展培训和研究项目（仅限宜兴学习中心）；
- 出席由 CTET 主办的论坛，近距离接触科学资讯，并获得与企业界（潜在雇主）建立联系的机会（仅限宜兴学习中心）；
- 可以使用校园设施，包括大型讲堂、多媒体教室、会议室、餐厅、健身房及图书馆等（仅限宜兴学习中心）。

## Introduction of the Learning Centre at Yixing 宜兴学习中心简介

Yixing is an economically prosperous industrial and commercial city located in Jiangsu Province. In 2020, it ranked 11<sup>th</sup> on the list of the top 100 counties in China. Yixing is also situated in an area of great natural beauty. It offers a rich cultural history - with more than 7000 years history of pottery handicraft, Yixing is famous for its Zisha teapot. It is also the hometown of a large number of academics and university presidents and professors, which makes it a distinguished historical and cultural city. ES&TP is a unique National Hi-Tech Industrial Development Zone focused on developing the environmental protection industry in Yixing. It is a modern industrial park which integrates R&D, manufacturing, engineering, construction and operations services. In December 2017, UNSW and ES&TP jointly established the Centre for Transformational Environmental Technologies (CTET) focusing on the development and commercialisation of innovative environmental technologies.

宜兴市位于江苏省，是一座经济发达的工商业城市。2020年，宜兴在全国百强县中排名第11位。宜兴也是一座生态城市，风景秀丽，生态禀赋独特。其制陶工艺有着7000多年的历史，独特的紫砂壶驰名中外。同时，宜兴培养了一大批院士、大学校长和教授，是一座杰出的历史文化名城。中国宜兴环保科技工业园是中国唯一以环保产业为主的国家级高新技术产业开发区，也是一所集研发、制造、工程、建设、运营服务为一体的现代化工业园区。2017年12月，新南威尔士大学与中国宜兴环保科技工业园联合成立了新南威尔士大学（宜兴）环境技术转移中心，专注于创新环保技术的开发和商业化。



Two accommodation locations in Yixing have been prepared for the new semester. Option 1 is located on the campus of Hubei Polytechnic University (HPU) in Yixing. It has sports facilities such as basketball court and tennis court. The student dormitory and canteen facilities make it an ideal place to live and study. The campus currently implements a semi-closed management approach from the perspective of epidemic control.

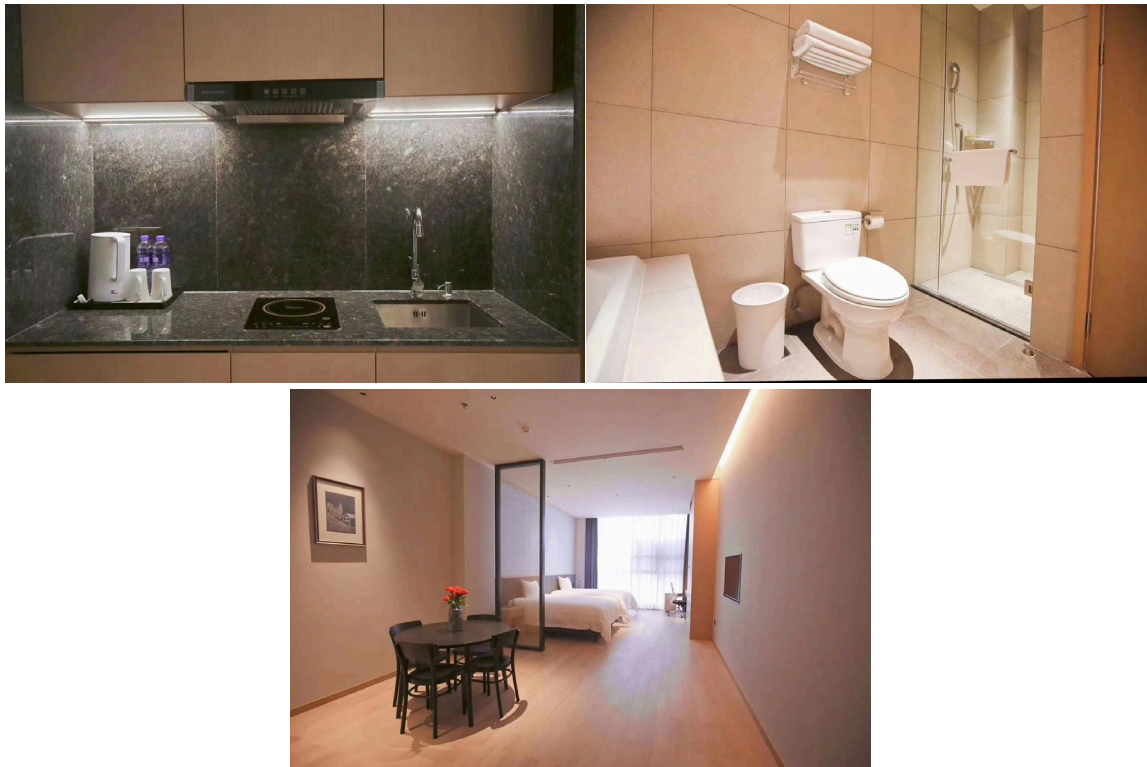
新南威尔士大学在宜兴为新学期的同学们提供了两处宿舍选择。地点一位于湖北理工学院宜兴校区，校区设有篮球场、网球场等运动场馆。学生宿舍和食堂设施齐全，是学生生活和学习的理想场所。目前，出于疫情防控考虑，校园正在实施半封闭管理政策。





Option 2 is the JC Self-service Apartment in ES&TP that is located on a busy street near Tuan Lake. Each room is equipped with washing machine, cooking facilities and study zone. In addition, a fitness room and free parking space will be provided. Students living here will have access to a CTET seminar room for group study or tutorials.

地点二是环科园内的杰希自助式公寓，该公寓地处繁华街区，毗邻团洑。每个房间都配有洗衣机、小型厨房和学习区域。另外还提供健身房和免费停车位。选择该处学生有权使用 CTET 的研讨室进行小组学习或讨论。



### Meet the UNSW CTET Team 新宜中心团队

CTET is an R&D Centre established in December 2017, focusing on the development and commercialisation of innovative environmental technologies. Co-funded by UNSW Sydney and the Yixing Industrial Park for Environmental Science and Technology (ES&TP), the Centre is located in the Jiangsu Innovation Centre of Industrial Technology for Environmental Protection Equipment in Yixing, Wuxi, Jiangsu, China. CTET was established as a flagship joint venture under the [Torch Innovation Precinct at UNSW](#).

CTET 成立于 2017 年 12 月，是一所专注于创新环保技术的开发和商业化的研发中心。该中心由 UNSW 和 ES&TP 共同出资，地处江苏省无锡市宜兴市的环保装备产业技术创新中心内，是新南威尔士大学火炬创

新园区框架下的首个旗舰型合资公司项目。



CTET currently has more than 20 staff with a variety of expertise in different areas of environmental technologies including water, air and soil. CTET is led by the Executive Chairman, Professor [David Waite](#) from the UNSW School of Civil & Environmental Engineering. CTET is in partnership with a wide range of industries in China including the China Academy of Sciences, Goldwind Environmental Protection, Beijing Origin Water, China Coal Technology Engineering Group, Jiangsu Academy of Environmental Science and Suez. CTET staff will provide coordination and mentoring support to the students enrolled at the Learning Centre. Selected students will have the opportunity to undertake research projects and (if needed) industrial training on projects with industry partners listed above.

CTET 目前有 20 多名员工，在水、空气和土壤等多个环境技术领域具有强大的专业知识背景。新南威尔士大学土木与环境工程学院的 David Waite 教授担任中心董事长，带领团队与中国多个行业伙伴建立了合作关系，包括中国科学院、金风环保、北京碧水源、中煤科工集团、江苏省环境科学研究院和苏伊士水务等。CTET 的工作人员将为在学习中心注册的学生提供项目协调服务。部分学生将有机会与上述合作企业进行联合研究项目和企业培训。

## FAQs for the Learning Centre at Yixing

### Eligibility and Fees 常见问题

- **Who will be eligible for the application of enrolment at the Learning Centre?**

All students from the UNSW Faculty of Engineering and the School of Material Science & Engineering are welcome to apply by submission of their EOIs. Other students will be considered based on the total number of applications received.

哪些学生可以申请于 UNSW 学习中心进行学习？

所有工程学部和材料科学与工程学院的学生都可通过填写 EOI 表格递交申请。其它学生的申请将根据最终收到的申请数量来确认是否能够接收。

- **Do I need to pay additional tuition fees for enrolment at the Learning Centre?**

You don't need to pay any additional tuition fees to enrol at the Learning Centre. You will need to pay your own food, accommodation, transport, medical and other living expenses, and you will need to continue to pay the normal tuition fees to UNSW.

如果来学习中心就读，我是否需要支付额外的学费？

您不需要支付任何额外的学费，但需自行支付食宿、交通、医疗和其他生活费用，并继续支付 UNSW 的正常学费。

- **Do I need to pay to use the facilities in the campus, i.e. stadium, study rooms, etc.?**

No, these services will be provided free of charge. Accommodation charges will apply, if relevant – see below

使用校园体育馆、自习室等设施是否需要付费？

不需要。这些服务是免费提供的。但住宿需要收费（详情见下）。

- **Is there any selection process if the number of received applications is more than hosting capacity?**

Yes, priority will be given to students nearing completion of their degree and needing to undertake a research project or industrial training to complete their degree. Consideration will be given to other applicants if places are available.

如收到的登记申请数量超出额定人数，是否会进行甄选程序？

是的。中心将会优先考虑即将毕业的学生，他们需要进行研究项目或企业培训来完成学位。如名额有余，接下来将会考虑其他申请人。

- **If the travel ban is not withdrawn after T1 2021, will the application of the Learning Centre also be available for further Terms?**

The current application is valid for T1 2021. UNSW will make further arrangements according to the situation of COVID-19 before T2 2021.

如果 2021 年第一学期后旅行禁令尚未解除，学习中心的申请是否会继续开放？

目前学习中心主要针对 2021 年第一学期，对于 2021 年第二学期学习中心的相关调整，UNSW 将根据之后的疫情变化及防疫政策进行安排。

- **For those who have applied Program Leave in T1 2021 and decided to register for this learning centre, can we rescind our Program Leave to continue?**

- Yes. Students who have applied for Program Leave can apply to rescind it if they plan to resume their program in the Learning Centre. Please contact the Faculty of Engineering to apply.

对于第三学期申请了休假的同学，如果计划于学习中心继续学业，是否可以撤销之前的休假申请？

可以。如果学生计划于学习中心继续项目开展，可以撤销之前的休假申请，请联系工程学院的负责部门进行申请。

## **Food and Accommodation 饮食与住宿**

- **Will accommodation be provided in or near the Learning Centre?**

Yes. Accommodation will be offered to students in either HPU's dormitory or JC Self-service Apartment at students' own expense. All rooms are equipped with internet, air conditioning and bathroom.

学习中心会于校园内或附近提供住宿吗？

是的。中心将为学生提供自费宿舍/公寓。所有房间都配有互联网、空调和浴室。

- **What are the room options?**

Two types of rooms will be provided: double room and single room in both HPU dormitory and JC Apartment. The estimated cost at HPU is approximately 6,000-8,000 RMB per person (including utilities bills) that covers the period from 19<sup>th</sup> February to 30<sup>th</sup> May 2021. Accommodation at JC Apartment costs 1500-3000 RMB per month excluding utilities bills.

有哪些宿舍类型可供选择？

湖北理工与杰希公寓均可提供双人间及单人间。湖北理工宿舍的住宿费约 6,000-8,000 元每人（包水电），有效起止日期为 2021 年 2 月 19 日至 2021 年 5 月 30 日。杰希公寓的租金为 1500-3000 每月，需自行承担水电费用。

- **Can I get an invoice or receipt for the accommodation fee?**

Yes.

我可以拿到住宿费用的发票或收据吗？

可以。

- **Is bed linen provided in the HPU dormitory?**

All beds are provided with standard bed linen. Students can also bring their own linen if they wish.

宿舍是否提供床上用品？

宿舍提供基本床上用品（枕头及被单），学生可以根据个人需要自行携带。

- **Can I change my room preference/s once I've paid the accommodation fee?**

It depends on whether there are available rooms. You can contact the admin staff from the Learning Centre for confirmation and coordination (their details will be provided in a subsequent notice).

预付住宿费后，我是否可以更改住宿类型？

这取决于届时学习中心是否仍有闲置房间可供选择。随后我们会提供中心的管理老师联系方式，您可以和他/她进行进一步沟通协调。

- **I want to share a room with a friend (also a UNSW student enrolled at the Learning Centre), can this be arranged?**

If you would like a shared room with a friend who is also a UNSW student enrolled at the Learning Centre, as soon as you've submitted your application, both you and your friend should contact the admin staff to register your request. We will do our best to accommodate you, but acceptance of your request will be based on room availability.

是否可以安排我和我的朋友（也是 UNSW 注册来学习中心学习的学生）住在一起？

如果您想和朋友一起居住（也是 UNSW 注册来学习中心学习的学生），递交申请后您和您的朋友可以立即联系管理老师对宿舍安排需求进行登记。中心将会尽全力满足大家所需，但具体安排仍需根据剩余房间数量来决定。

- **What if I don't want to live at HPU or JC Apartment?**

Sorry. All students are required to be located at either HPU or JC Apartment.

是否可以于校外住宿？

所有学生均需根据学校安排统一住宿管理，暂时不允许学生于自寻住处。

- **Is a food court available at/near the Learning Centre?**

An on-campus canteen provides daily meals at HPU. Each room at the JC Apartment has a kitchen area.

学习中心附近有饮食区吗？

湖北理工校内食堂提供一日三餐。杰希公寓则配备有厨房。

- **Is it convenient to live and shop around?**

A supermarket is located in front of the campus and there are multiple restaurants nearby. Take-away and express delivery services are also available.

学习中心附近的生活和购物是否方便？

校园对面有一家大型超市而可满足日常所需。附近有多家餐厅可提供多样的饮食选择。外卖和快递服务也会开放。

- **Can I have study room for independent learning and group discussion?**

Yes. Students can use the study rooms on campus for learning and discussion for free.

我是否可以使用自习室进行独立学习与小组讨论？

是的。校园的自习室可免费提供给学生开展学习与小组讨论。

- **What documents do I need to bring when I move in?**

Please make sure you bring your UNSW student card and identification card.

开学注册登记时我需要携带哪些材料？

请确保随身携带您的 UNSW 学生卡及身份证。

- **If I want to terminate my study experience in UNSW Learning Centre in China, what can I do?**

If you wish to terminate your enrolment in UNSW Learning Centre, you need to give a written notice to the Learning Centre via email at least 5 working days in advance.

如果我需要终止在学习中心的学习，应该怎么做？

如果您需要终止在学习中心的学习计划，请至少提前 5 个工作日通过邮件书面通知学习中心的工作人员。

- **Is the accommodation fee refundable?**

Unfortunately, no.

住宿费是否可以退回？

住宿费缴纳后不予退回。

- **Can I sublet my room?**

Unfortunately, no.

我可以转租我的房间吗？

不可以。

- **Can the Internet in the Learning Centre access VPN?**

Yes. Students can use the VPN provided by UNSW on campus.

学习中心的网络是否可以使用 VPN？

是的。学生可在学习中心使用 UNSW 提供的 VPN。

## Course and Project 课程与项目

- **Which courses are available at the Learning Centre?**

The Learning Centre will be able to cater to the needs of all enrolled students to complete the required courses that are available online. Fast internet speed is guaranteed across the campus.

学习中心可以提供哪些课程？

学习中心能够满足所有在册学生完成必修在线课程的需要，并保证在校园范围内的高速网络。

- **Is it compulsory to attend the Learning Centre to complete my online courses?**

No. You don't have to attend the Learning Centre to complete your online courses.

是否必须参加学习中心才能完成我的在线课程？

不是。参加学习中心并不是完成在线课程的必需要求。

- **Will the Learning Centre provide assistance in relation to my thesis project?**

Yes. The staff from the Learning Centre will provide assistance in relation to thesis project coordination, including negotiation with local industries or research institutes for project topics, coordination with UNSW academic supervisors and local support from UNSW graduates based at CTET over the duration of the research project or industrial training. Of course, students will still need to meet UNSW's academic expectations in completing their projects.

学习中心是否会为我的论文项目提供帮助？

是的。学习中心的工作人员将提供论文项目协调方面的帮助，包括与当地产业或研究机构就项目主题进行确定以及与 UNSW 的学术导师进行协调。并且，于 CTET 工作的 UNSW 毕业生也会在研究项目或企业培训期间提供在地支持。当然，您需要达到 UNSW 学术导师的要求才可以完成您的论文项目。

- **How will the group activities be arranged?**

Students may initiate group learning activities with these activities facilitated by CTET staff if such activities are considered of value.

课后小组学习将如何安排？

如果学生认为小组学习活动有价值，可在 CTET 员工的协助下发起小组学习活动。

- **What time can I use the facilities in labs?**

The Learning Centre will not operate any laboratories. Laboratories required for research projects and IT will be provided by the industry partner or Research Institute supporting the project or IT placement. For students who need to undertake lab courses or workshops, they may need to defer their courses until they can return to Sydney.

**我什么时候可以使用实验室的设备？**

学习中心将不会开设实验室。研究项目所需的实验室及设备将由支持该项目的行业合作伙伴或研究机构提供。学生如果需要完成实验课或车间实习，则需要推迟该部分课程，或将来继续寻求其它学习中心的相关机会。

- **Will I get assistance finding training opportunities near the Learning Centre?**

Yes. The Learning Centre will be responsible for the organisation of “matching” sessions between students and local industry and will assist in coordination with local industries.

**我是否会获得寻找培训机会方面的协助？**

是的。学习中心将负责组织学生和当地企业之间的“配对”环节，并协助后续协调。

- **What is the protocol for undertaking my project at the Learning Centre?**

Immediately after the commencement of T1, CTET will coordinate the projects between students, UNSW and local industries based on the following procedures.

1. Submit your Express of Interest (EOI) on preferred disciplinary area during application;
2. Work with CTET and Learning Centre staff and meet with a local industry in Yixing in relation to your preferred area;
3. Discuss a potential thesis topic together with the local industry and a CTET staff member;
4. CTET staff and the UNSW Staff (the Torch Team) will help identify an academic supervisor at UNSW;
5. CTET organise three-way meetings between local industry, UNSW supervisor and you to discuss thesis topic;
6. CTET assign an external supervisor (from industry, research institute) who will jointly supervise your project together with UNSW academic;
7. CTET assign mentor (if necessary) to facilitate communication between external supervisor and UNSW supervisor; and
8. Return all required forms to UNSW

**在学习中心进行研究项目的流程是怎样的？**

1. 学生在递交入学申请表格时填写感兴趣的学科或研究方向；
2. 与 CTET 和学习中心的员工一同会见与学生兴趣方向对口的宜兴当地企业；
3. 学生与 CTET 员工和当地企业共同商定一个可能的论文主题；
4. CTET 员工和 UNSW 火炬团队帮助学生确认对应的 UNSW 学术导师；
5. CTET 组织当地企业、UNSW 导师与学生之间进行三方会议，就论文主题展开讨论；
6. CTET 委派一名来自企业或研究机构的外部导师与 UNSW 导师共同指导学生的项目；
7. 如有必要的话，CTET 将分指导员以促进外部导师和 UNSW 导师之间的沟通；
8. 完成 UNSW 所需表格并递交。

- **Can year 3 students apply the industrial training at the Learning Centre?**

Yes. It would be a good time for students to do their industrial training in year 2 or year 3.

**三年级的学生是否可以申请于中国中心进行企业实习？**

可以。三年级和二年级的学生都可以考虑利用此次机会进行企业实习。

- **If I have finished my IT, can I apply for intern in the Learning Centre to further expand my industrial experiences?**

Yes. You can do another internship at the Learning Centre.

**我目前已经完成了企业实习，是否可以于学习中心再次申请实习，以丰富自己的企业工作经验？**

可以。您可以于学习中心再次申请实习。

- **If I start my research thesis project in the Learning Centre, how can I continue the project if the Australian boarder was open next term?**

The Learning Centre will help students to find a UNSW supervisor for their project. Students can continue their projects and complete any remaining components with their supervisor if they are able to return to UNSW campus next term.

如果学生于学习中心开始了研究项目，澳洲边境开放回到校园后学生将如何继续？

学习中心的工作人员将会为学生联系 UNSW 的学术导师，以指导项目进行。如果澳洲边境开放允许学生回到 UNSW 继续学习，学术导师也会继续指导学生直至项目完成。

## Registration and Enrolment 登记与入学

- **Will the Learning Centre timetable be consistent with UNSW academic calendar?**

Yes. The Learning Centre will follow a timetable that is consistent with the academic calendar of UNSW Sydney but the commencement date will be postponed to 22<sup>nd</sup> Feb after the Chinese New Year holiday.

学习中心的时间表是否与 UNSW 校历一致？

是的。学习中心的时间表将与 UNSW 的校历一致。但考虑到农历新年假期，开学日将被推迟到 2021 年的 2 月 22 日。

- **Who will be providing the day-to-day support in the Learning Centre for student management and course coordination?**

Administrative support will be provided by CTET and the Learning Centre staff who will look after local enrolment, use of facilities, allocation of student accommodation, and maintenance of a register of industry placement for both industrial training and research projects (thesis).

谁将在学习中心为学生管理和课程协调提供日常支持？

CTET 和学习中心的工作人员将提供行政管理支持，包括办理本地入学、设施使用、学生住宿分配，以及学生企业培训和研究项目（论文）合作企业目录的创建与维护。

- **How do I register to attend the Learning Centre?**

The application website will be open from Sunday 18<sup>th</sup> December. Students can complete their EOI information on the website. A confirmation letter will be sent to successful applicants from Friday 15<sup>th</sup> January 2021. After that, students need to complete the payment of accommodation fee to finally secure the position.

我怎样才能注册锁定学习中心的位置？

申请网页入口将于 12 月 18 日正式开启，学生可通过网页递交自己的申请意愿。2021 年 1 月 15 日起，申请成功的学生将收到确认信。随后，可进行住宿缴费以最终锁定位置。

- **Will there be an orientation at the Learning Centre?**

Yes, a local orientation for enrolled students will be held at CTET before the commencement date.

学习中心是否有入学迎新指导？

是的。中心将在正式开学日期前于宜兴举行迎新活动。

- **Can I pay a visit to HPU Yixing campus or JC Apartment?**

Yes, but according to the epidemic prevention policy, HPU campus is now implementing semi-closed management. Students need to contact the staff at HPU and obtain approval before departure.

开学前我是否可以前往湖北理工学院宜兴校区进行参观？

可以。鉴于目前疫情防控形势，湖北理工学院宜兴校区实施全封闭管理。学生请务必提前联系学校老师，获得批准后方可进入校园。

## **In response to COVID-19 新冠疫情防控政策**

- **In response to COVID-19, what documents do I need to bring when I check in?**

The Ministry of Education and the National Health Commission recently issued a guideline on COVID-19 control and prevention. Students entering the campus should have their body temperature checked and their health code scanned. Student will need to carry medical face masks but in low-risk areas will not have to wear them. Students from low-risk areas must present a green health code to be able to return to campus. Those from medium-risk or high-risk areas will need to have a negative result in a nucleic acid test in the week before they enter campus. The CLC will keep students updated with the newest policy.

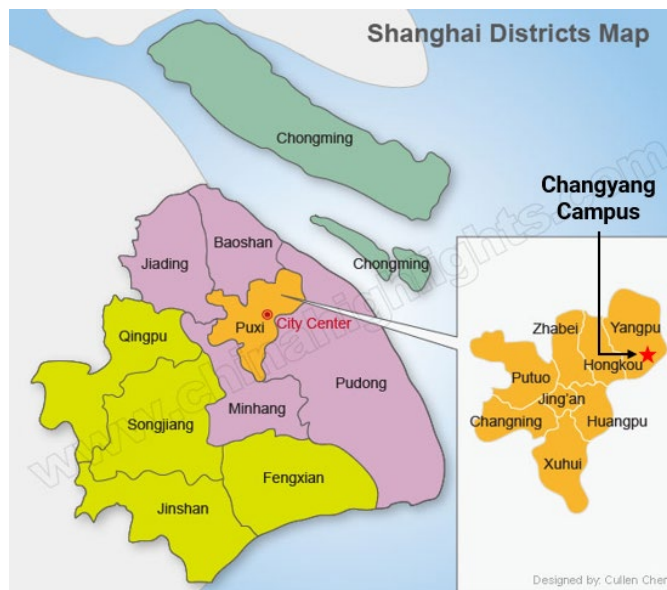
**根据新冠疫情防控政策，入学登记时我应该做好哪些准备？**

根据中国国家教育部和国家卫生健康委员会的最新指导意见，进入校园的学生应进行体温检查和健康码扫描。学生需要携带医用口罩，但在低风险地区不强制佩戴。来自低风险地区的学生必须出示绿色健康码才能进入校园，来自中高风险地区的学生，则需要在进入校园前一周进行核酸检测，且检测结果为阴性方能入学。开学前最新的防控政策将会为学生随时进行更新。

## Introduction of the Learning Centre at Shanghai

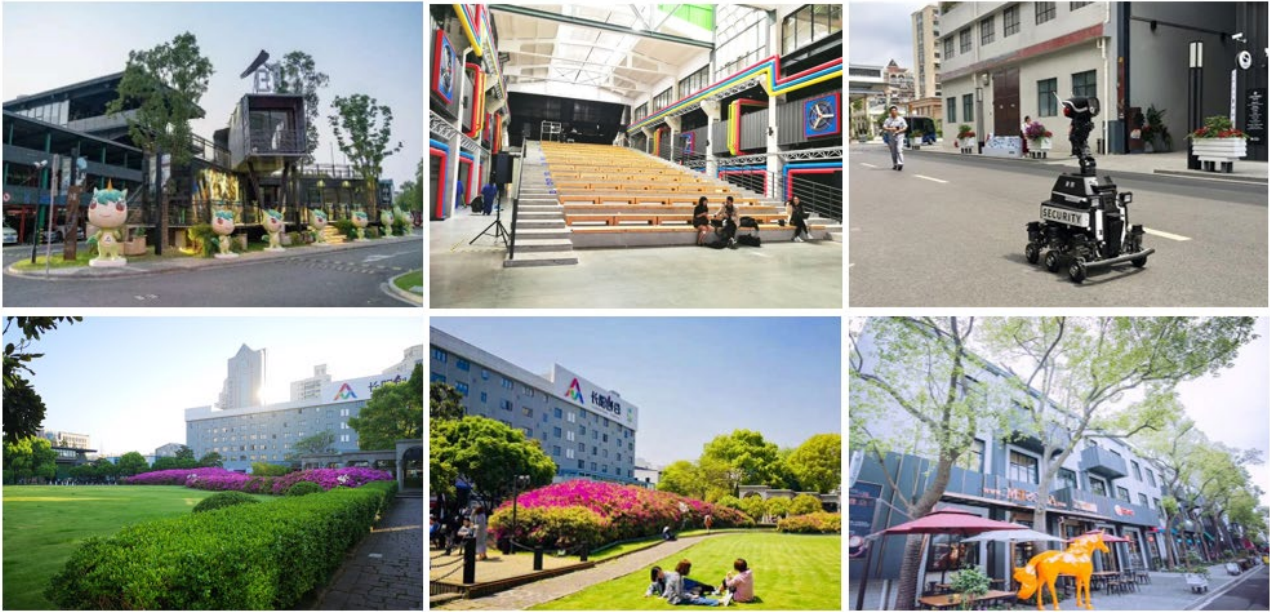
Changyang Campus sits in Yangpu district, which is the largest and most populous central district located in the northeast of downtown Shanghai. Yangpu District has gathered more than 60 maker spaces and over 20 Science Parks. There are 10 famous universities and over 100 scientific research institutions in Yangpu district. As a well-known innovative industry park in Shanghai, there are plenty of listed companies and Unicorn enterprises in the Campus.

上海学习中心位于杨浦区的长阳创谷。杨浦区是上海人口最多的市中心区域，不仅聚集了 60 多家创客空间和 20 多个科技园区，还有 10 所著名大学和一百多家科研机构。作为一个享誉上海的创新产业园区，园区内有众多上市公司和独角兽企业。



There are more than 10,000 sqm of beautiful lawn and orchard in Changyang Campus. The construction and design focus on sustainability and environment, thus, it brings natural lighting and fresh air into buildings to create a comforting and friendly space like university campus overseas. Restaurants featured in Western and Asian cuisine, grocery stores, gym, bookstore and printing service are all within walking distance to bring a convenient and dynamic life to students.

虽说是创业园区，园内有超过一万平方米的草坪和果园。建筑设计中充分考虑到环境的可持续性，将清新空气、自然阳光引入建筑物内，创造亲切舒适、类似国外大学校园的空间体验。西式餐厅、亚洲美食、便利店、健身房、书店和印刷服务都步行范围以内，为学生带来了便利而充满活力的生活。



Shanghai Learning Centre can accommodate max 50 students at the same time. It used to be a showroom on the ground floor with sufficient natural lighting. The space is 150 sqm equipped with high-resolution TV, projector and air-conditioning. High-speed internet service will be installed to ensure online studying experience.

上海学习中至多可同时容纳 50 名学生。它的前身是一个展厅，拥有大面积落地玻璃窗，自然采光充足。在 150 平米的学习空间里配置了高清电视、投影仪和空调，并将安装高速网络设备确保同学们在线学习体验。



## FAQs for Learning Centre at Shanghai

### Eligibility and Fees 申请资格与费用

- **Who will be eligible for the application of enrolment at the Shanghai Learning Centre?**  
Students above 18 years old who have enrolled for T1 2021 and are able to organise accommodation on their own in Shanghai are welcome to apply by submission of their EOIs. No restriction for degrees or programs.  
**哪些学生可以在 UNSW 上海学习中心进行学习?**  
该学习中心向所有年满 18 周岁、能自行安排并支付在上海的住宿并且已注册 2021 第一学期课程的学生开放。无学位或学院限制。
- **Do I need to pay additional tuition fees for enrolment at the Shanghai Learning Centre?**  
You don't need to pay any additional tuition fees to enroll at the Shanghai Learning Centre. You will need to organize and pay for your own food, accommodation, transport, medical and other living expenses, and you will need to continue to pay the normal tuition fees to UNSW.  
**如果来 UNSW 上海学习中心就读，我是否需要支付额外的学费?**  
您不需要支付任何额外的学费，但需自行支付食宿、交通、医疗和其他生活费用，并继续支付 UNSW 的正常学费。
- **Shanghai Learning Centre will offer the studying slot based on first book first serve. How do I book a seat?**  
Only accepted students will have the access to our booking system. If you are coming from other cities outside of Shanghai, your seat is guaranteed throughout T1 2021.  
**在 UNSW 上海学习中心学习需要提前通过预定系统进行座位预定，并且基于先订先得的机制，我该如何预定呢?**  
被 UNSW 上海学习中心录取的同学方可使用我们的预订系统。若你来自上海以外的地区并收到确认书，2021 第一学期期间，你的座位将被保留。
- **Is there any selection process if the number of received applications was more than hosting capacity?**  
Yes. The applicants will be selected according to the requirements from the University.  
**如收到的登记申请数量超出额定人数，是否会进行甄选程序?**  
是的。如果受到的登记申请数量超出额定人数，中心将按照学校要求进行筛选。
- **If the travel ban is not withdrawn after T1 2021, will the application of the Learning Centre also be available for further Terms?**  
The current application is valid for T1 2021. UNSW will make further arrangements according to the situation of COVID-19 before T2 2021.  
**如果 2021 年第一学期后旅行禁令尚未解除，学习中心的申请是否会继续开放?**  
目前学习中心主要针对 2021 年第一学期，对于 2021 年第二学期学习中心的相关调整，UNSW 将根据之后的疫情变化及防疫政策进行安排。

### Food and Accommodation 饮食与住宿

- **Will accommodation be provided in or near the Shanghai Learning Centre?**  
No. You need to organize your own accommodation. No recommendation will be provided either.  
**UNSW 上海学习中心会于校园内或附近提供住宿吗?**  
不会。您需要自己解决住宿。我们将不提供推荐和建议。
- **Is a food court available at/near the Shanghai Learning Centre?**  
Yes, there are quite a few restaurants and café near the Shanghai Learning Centre within walking

distance.

**UNSW 上海学习中心附近有饮食区吗？**

是的，在步行范围内有许多餐厅和咖啡厅。

- **Can I eat in the Shanghai Learning Centre?**

No. Eating is not allowed in the Shanghai Learning Centre. Please keep the space tidy and clean.

可以在 UNSW 上海学习中心进食吗？

不可以。学习中心禁止饮食，请保持学习环境的整洁。

## **Registration and Enrolment 登记与入学**

- **Will the Shanghai Learning Centre timetable be consistent with UNSW academic calendar?**

The Shanghai Learning Centre will commence on Monday 22<sup>nd</sup> February and open till end of Term 1.

UNSW 上海学习中心将于 2 月 22 日（星期一）开始，至第一学期结束

- **Who will be providing the day-to-day support in the Shanghai Learning Centre for student management and course coordination?**

Administrative support will be provided by UNSW China Centre and Student Ambassador.

谁将在 UNSW 上海学习中心为学生管理和课程协调提供日常支持？

悉尼新南威尔士大学中国中心的工作人员和学生管理员将提供行政管理支持。

- **How do I register to attend the Shanghai Learning Centre?**

The application website will be open from 18<sup>th</sup> December 2020. Students can fill their EOI information on the website. And the confirmation letter will be sent to successful applicants by 15<sup>th</sup> January 2021. The booking system will launch on 8<sup>th</sup> February 2021.

我怎样才能注册锁定 UNSW 上海学习中心的位置？

申请网页入口将于 2020 年 12 月 18 日正式开启，学生通过网页递交自己的申请意愿。2021 年 1 月 15 日前，申请成功的学生将收到学校的确认信。座位预定系统将于 2021 年 2 月 8 日开放预定。

## **In response to COVID-19**

- **In response to COVID-19, what documents do I need to bring when I check in?**

The Ministry of Education and the National Health Commission recently issued a guideline on COVID-19 control and prevention. Students entering the Centre should have their body temperature checked and their health code scanned. Student will need to carry medical face masks. The Centre will keep students updated with the newest policy.

根据新冠疫情防控政策，入学登记时我应该做好哪些准备？

根据中国国家教育部和国家卫生健康委员会的最新指导意见，进入 UNSW 上海学习中心的学生应进行体温检查和健康码扫描。学生需要携带医用口罩。开学前最新的防控政策将会为学生随时进行更新。